



To access services call the Domestic Abuse Helpline on:

**0800 731 0055**

The Helpline is staffed from 10am-4pm Monday to Saturday.

We accept self referrals and agency referrals.

Email address for agency use only:

[oxfordshiredomestic@a2dominion.co.uk](mailto:oxfordshiredomestic@a2dominion.co.uk) (if you are a client or applicant of this service, please use the helpline number above for priority assistance)

In an emergency please dial 999

For 24 hour advice call:

0808 2000 247

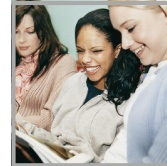
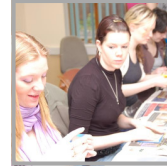
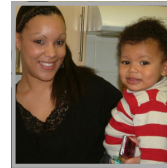
For translation services or alternative formats...



0845 408 6786

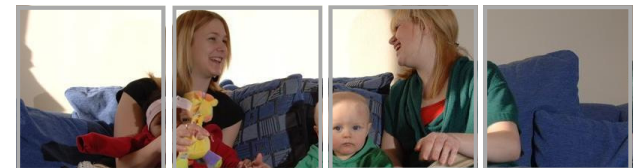
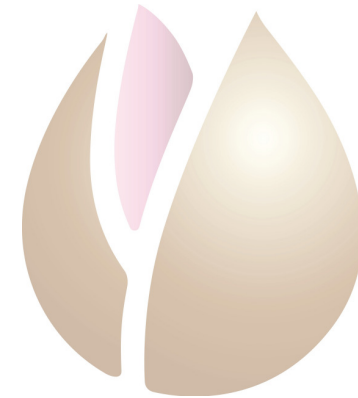


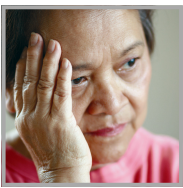
[translate@a2dominion.co.uk](mailto:translate@a2dominion.co.uk)



# West Berkshire Domestic Abuse Services

**Confidential service for clients to rediscover  
freedom of choice and self-esteem**





## About the service

West Berkshire Domestic Abuse services offer emotional and practical support to victims suffering or fleeing domestic abuse. Support can include:

- Phone support.
- Face to face meetings in a safe environment.
- Safety planning.
- Access to confidential refuges where women (with or without children) can stay temporarily in order to escape an abusive relationship. Support is available for children in refuge accommodation.
- Help to recognise abusive and non-abusive behaviours.
- Support accessing other services for victims and their children.
- Signposting to other agencies.

## Who is eligible?

- All Women, with or without children, regardless of sexuality, ethnicity and immigration status.
- The service is available even if you have no recourse to public funds.
- Services can be provided whether or not you are in a current relationship with the abuser.
- Outreach support can be accessed by male clients.
- All levels of risk can be accommodated.

## Domestic abuse includes:

- Physical violence and threats
- Emotional abuse
- Sexual abuse and violence
- Financial abuse
- Forced marriage
- 'Honour' based violence
- Female genital mutilation
- Stalking and harassment

## Our aims

- To provide a high quality, confidential service to support women, with or without children, fleeing or at risk of domestic violence.
- To assist women to develop the skills needed to live independently, and to manage their tenancy in order to secure their own permanent accommodation.
- To support women to access the right services for themselves and their children.
- To be client centred in our approach.
- To empower women and children and give them the opportunity to learn and develop in order to increase quality of life, and options for future employment.
- To recognise that each person has individual needs.
- To increase the self esteem and self image of women and children fleeing domestic violence.
- To work with other services to ensure the needs of each woman and each child are met.

## Our promise

To provide a confidential service for you to rediscover freedom of choice and self esteem. The service is client focussed, promotes independence and provides independent advocacy. Translation services are available if English is not your first language.

## This service is delivered in partnership with:

- West Berkshire Council
- Affiliated to National Women's Aid

**To access services call the Domestic Abuse Helpline on: 0800 731 0055**

Email address for agency use only:

[oxfordshiredomestic@a2dominion.co.uk](mailto:oxfordshiredomestic@a2dominion.co.uk) (if you are a client or applicant of this service, please use the helpline number above for priority assistance).

