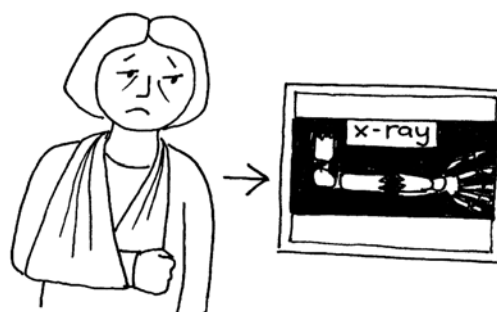


## Having an X-ray

If you are ill or hurt your doctor (GP) may want you to have an X-ray – this is a photograph of the inside of your body.



Sometimes, if you are very ill or hurt, you may need to go to the Emergency Department at the hospital – known as A&E – and they might send you for the X-ray.



When you arrive at the X-ray Department, the receptionist will take your card (if you have come from your GP) and will ask you to wait in a special area.



## Having an x-ray – Easy Read

If you have been sent by A&E you will go to the X-ray Department on a trolley or in a wheelchair. Your carer can go with you.



All the staff in the hospital wear a name badge and when they speak to you, they should always tell you their name.



When the person X-raying you is ready for you, he or she will call you and may ask you to undress in a changing room. If you do have to undress, you will be given a hospital gown to wear.



The person X-raying you may also ask you to take off your jewellery or watch, if it is near where you are hurt. Give them to your carer to look after. You can put them back on in a short while, after the X-ray.



## Having an x-ray – Easy Read

You may have to stand up or lie down on a bed under the X-ray machine.

The person taking the X-ray may take a few moments to place the machine in the right place.

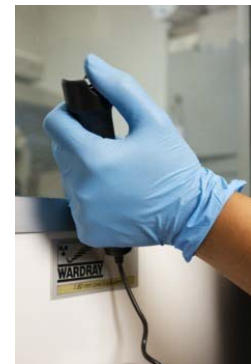
You will be asked to stay very still while they go behind a screen to press a button. This will beep while the X-ray is being taken.



Your carer can stay in the room with you but may be asked to stand behind a screen while your picture is taken.

The X-ray will only take a few seconds and will not hurt.

The person taking the X-ray will then check the X-ray to make sure the right area is taken.



You can then go and get dressed and leave the hospital.

The results of the X-ray will be looked at by your doctor.



If you or your carer needs help while you are in the hospital, ask one of the nurses to either call the Learning Disability Co-ordinator on ext 8159 or PALS on ext 8338.



More information for people with learning disabilities and their carers can be found on the Trust website at: [www.royalberkshire.nhs.uk](http://www.royalberkshire.nhs.uk)



Also available in this series:

- Getting help in hospital
- Going into hospital
- Going to the Acute Medical Unit
- Going to the Accident & Emergency Department (A&E)
- Having a blood test
- Having a general anaesthetic
- Having a scan
- Washing your hands
- What happens in pre-operative assessment



Easy Read booklet number 3. Images courtesy of PhotoSymbols, the Change Picture Bank and RBFT. January 2015.