

Sick Day Rules for children with diabetes on two or three times daily insulin regimes

This leaflet outlines 'Sick Day Rules' for children with diabetes who are on two or three times daily insulin regimes.

When you are ill your body needs more energy to fight the infection.

Glucose is released from your body stores to do this, so the blood glucose tends to go up even if you are not eating.

This means that you need more insulin than usual when you are ill.

If you do not give enough insulin then your body cannot use the extra glucose so will start to break down fat for energy.

When fat is broken down, this produces ketones.

Ketones are very dangerous!



What are ketones?

Ketones are acids which can quickly make you feel very unwell and can make you vomit. They can make you feel breathless. If you do not get rid of the ketones, you can become extremely unwell and would need urgent hospital treatment (diabetic ketoacidosis (DKA)).

Ketones can still be produced when you are ill even when your blood glucose is low.

Therefore:

- **Never stop your insulin even if you are not eating.**
- **Always check for ketones if you feel unwell regardless of your blood glucose level.**
- **Inform your Diabetes Team of illness.**

To find out more about our Trust visit www.royalberkshire.nhs.uk

Please ask if you need this information in another language or format.

Paediatric Unit, Reviewed: October 2021.

Next review due: October 2022

NEVER STOP YOUR INSULIN + ALWAYS CHECK FOR KETONES REGARDLESS OF BLOOD GLUCOSE

CHECK BLOOD KETONES

Blood Ketones less than 1.0

<p>Blood glucose less than 6</p> <p>↓</p> <p>Give ¾ of your usual insulin dose</p> <p>↓</p> <p>If not eating, take frequent small sugary drinks, or Glucogel if necessary</p>	<p>Blood glucose 6-15</p> <p>↓</p> <p>Usual insulin at usual time</p>	<p>Blood glucose more than 15</p> <p>↓</p> <p>Usual correction dose + usual insulin at usual time</p> <p>↓</p> <p>Frequent sugar-free drinks</p>
---	---	--

Blood Ketones 1.0 – 2.9

Usual insulin at usual time + **EXTRA INSULIN NOW** (see table)

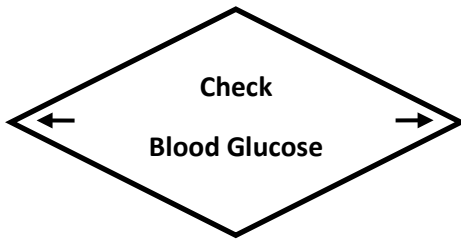
Extra insulin	
Weight (Kgs)	NovoRapid dose (units)
10	1
20	2
30	3
40	4
50	5
60	6
70	7
80	8
90	9

Blood Ketones 3.0 or more

Inform Diabetes Team

Usual insulin at usual time + **EXTRA INSULIN NOW** (see table)

Extra insulin	
Weight (Kgs)	NovoRapid dose (units)
10	2
20	4
30	6
40	8
50	10
60	12
70	14
80	16
90	18



Blood glucose less than 6

Frequent small sugary drinks or Glucogel

Blood glucose more than 6

Frequent sugar-free drinks

Check blood ketones and glucose every 2 hours and repeat process until child is recovered

- Contact team if:**
- Increasingly unwell
 - Ketones more than 3 or persist for more than 6 hours
 - Vomits more than twice
 - You have to give a second extra dose of insulin
 - Unable to maintain blood glucose above 4
 - Worried for any reason

Phone numbers

0118 322 8922 (nurses)

After 8pm 0118 322 5111 and ask to bleep paediatric registrar