

# Care and maintenance

## Cleaning

It is important to keep your hearing aid and earpiece clean to reduce the risk of infections and ensure your hearing aid is working optimally.



You should wipe your earmould or dome using a tissue or antibacterial wipe every time you take it out. This helps prevent a build-up of wax and guards against infection.

If you notice any debris blocking the end of your earmould or dome, this needs to be removed using a method specific to your hearing aid type.

### Aids with earmoulds

It should be possible to hook out wax or debris blocking the end of your mould using the cleaning tool provided as shown in the picture.

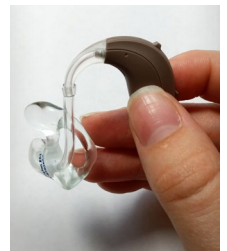
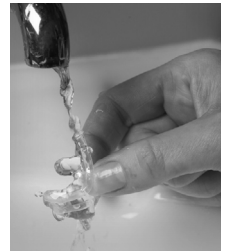
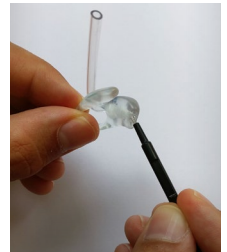
Occasionally your earmoulds may benefit from a deeper clean using the following method:

1. Remove the earmould and attached tubing from the hearing aid by holding onto the rubber tubing and the hearing aid 'hook' and pulling apart.

*If this proves difficult, your tubing might need changing (see section on retubing moulds).*

2. Put the hearing aid to one side and soak the earmould (with attached tubing) in warm soapy water. Clean it using the brush and hook provided.
3. Rinse and dry your earmould. Ensure all moisture is cleared from the tubing by shaking it out and leaving to dry for a few hours (or overnight).
4. Once the mould and tubing is completely dry reattach the mould to your hearing aid by pushing the tubing firmly onto the hearing aid hook.

*Make sure the mould is aligned as shown in the picture otherwise you may struggle to insert it!*

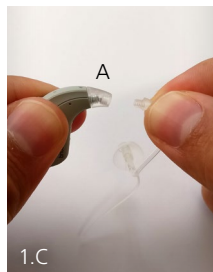
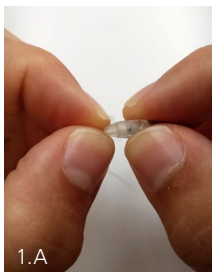


## Aids with thin tubes

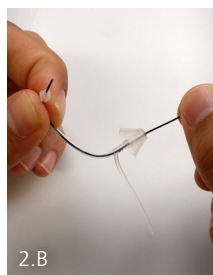
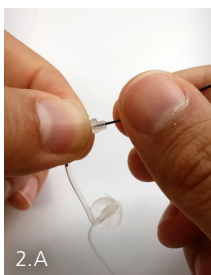
To remove any wax or debris blocking your thin tube use the following steps. You will need the 'cleaning wire' provided at your fitting appointment.

1. Remove the thin tube from the hearing aid by pinching it where it joins to the hearing instrument and unscrewing it counter-clockwise.

*Make sure the small clear 'connector' (marked A) remains attached to the aid.*



2. Push the cleaning wire into the screw end and all the way through the thin tube so that the wire comes out through the dome. Make sure the hole is now clear of wax.



3. To reattach the thin tube to the aid, hold the screw end of the tube and push it into the 'connector' portion of the aid – you may feel a click.



4. Hold the tip of the tube and wind the hearing aid clockwise until it is finger tight and the aid is correctly aligned with the tube as shown in the picture.

*Do not over tighten as you may kink the tubing.*

