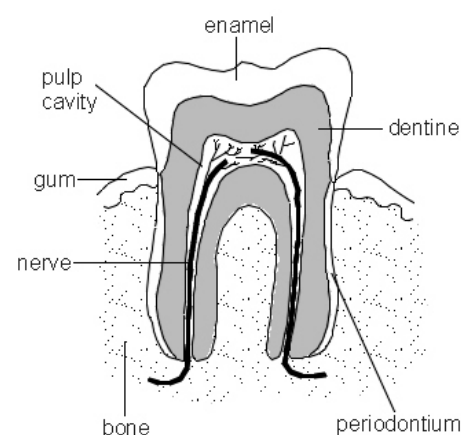


## Dental pain (toothache)

You have attended the Emergency Department because of toothache. This leaflet gives advice on next steps.

### What is causing my toothache?

Your toothache may be caused by cavities (tooth decay). Cavities expose the nerve of the tooth to air and hot or cold temperatures. It may come from an infection or abscess around your tooth. This causes the pain you are having.



### What is the treatment?

- If caused by an infection, it may be treated with antibiotics (medications which kill germs) and painkillers.
- You may take ibuprofen and paracetamol as needed for pain or fever (following dosage instructions on packets). In severe cases the Emergency Department may prescribe you additional painkillers.
- Whether the tooth ache today is caused by infection or dental disease, you should see your dentist as soon as possible for further care.

### Getting further treatment

The examination and treatment you received today has been provided on an emergency basis only. This is not a substitute for complete medical or dental care. If your problem worsens or new symptoms appear, and you are unable to meet with your dentist, call or return to your nearest Emergency Department.

If you require urgent treatment, please contact your usual dental practice as they may be able to see you or direct you to an urgent care dental service. If you do not have a regular dentist, contact NHS 111 for advice on where you can get urgent care.

Alternatively you can ring:

- Berkshire East Out of Hours Service on 0118 9365390.
- Berkshire West Out of Hours Service on 0845 6020701.

### What to look out for

Seek immediate medical attention if you develop any of the following symptoms:

- You develop a fever over 102°F (38°C).
- You develop redness and swelling of your face, jaw, or neck.
- You are unable to open your mouth.
- You have severe pain uncontrolled by pain medicine.

### Tell us your views

If you wish to discuss any aspect of your treatment and care, please speak to a senior member of staff or to the nurse looking after you. The matrons are also available during normal working hours and they welcome your views.

You can also pick up a copy of the Trust leaflet called 'Talk to us', which explains how you can raise concerns or give feedback on your experience at the hospital.

### Friends and Family Test

Whatever your experience you can give feedback by answering the Friends & Family test question – *How likely are you to recommend our service to family and friends if they needed similar care or treatment?* - by going online [www.royalberkshire.nhs.uk/get-in-touch/friends-and-family-survey.htm](http://www.royalberkshire.nhs.uk/get-in-touch/friends-and-family-survey.htm).

### Further information

More information is available on the Trust website:

[www.royalberkshire.nhs.uk](http://www.royalberkshire.nhs.uk)

Royal Berkshire NHS Foundation Trust

London Road

Reading RG1 5AN

0118 322 5111 (switchboard)

Based upon information from ExitCare® Patient Information ©2008 ExitCare, LLC.

Emergency Department

December 2017. Review due: December 2019