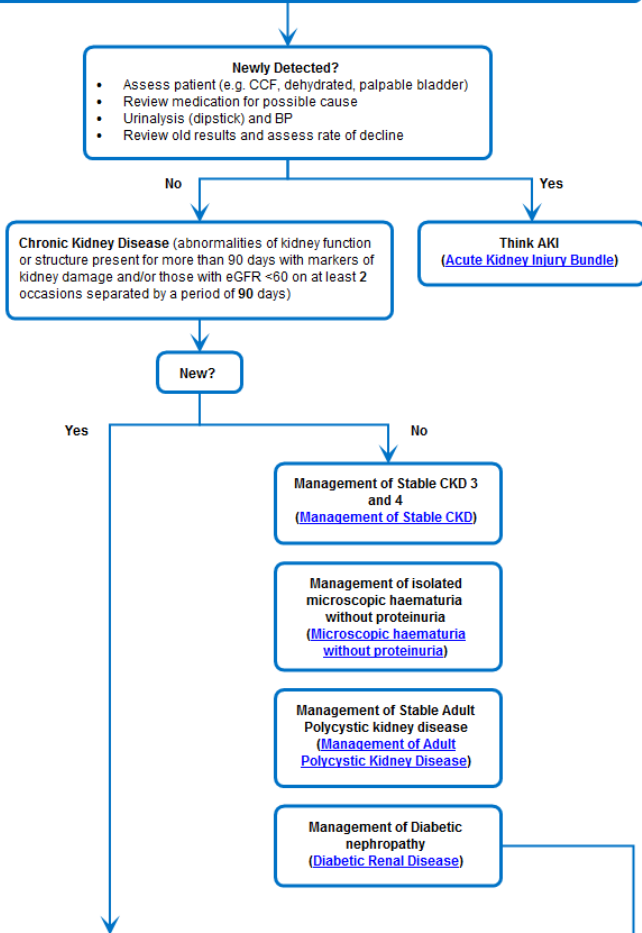


CKD GP Management Pathway



GFR and ACR categories and risk of adverse outcomes			ACR categories (mg/mmol), description and range		
			<3 Normal to mildly increased	3-30 Moderately increased	>30 Severely increased
			A1	A2	A3
GFR categories (ml/min/1.73 ²), description and range Persistent evidence of \leqGFR and/or evidence of kidney damage (3 x readings) >90 days	≥90 Normal and high	G1	[White Classification (G1A1, G2A1)]	[Green classification (G1A2, G2A1, G3aA1)]	[Amber Classification (G1A3, G2A3, G3aA2, G3bA1)]
	60-89 Mild reduction related to normal range for a young adult	G2	[White Classification (G1A1, G2A1)]	[Green classification (G1A2, G2A1, G3aA1)]	[Amber Classification (G1A3, G2A3, G3aA2, G3bA1)]
	45-59 Mild – moderate reduction	G3a ¹	[Green classification (G1A2, G2A1, G3aA1)]	[Amber Classification (G1A3, G2A3, G3aA2, G3bA1)]	[Red Classification (G3aA3, G3bA2, G3bA3, G4A1, G4A2, G4A3, G5A1, G5A2, G5A3)]
	30-44 Moderate – severe reduction	G3b	[Amber Classification (G1A3, G2A3, G3aA2, G3bA1)]	[Red Classification (G3aA3, G3bA2, G3bA3, G4A1, G4A2, G4A3, G5A1, G5A2, G5A3)]	[Red Classification (G3aA3, G3bA2, G3bA3, G4A1, G4A2, G4A3, G5A1, G5A2, G5A3)]
	15-29 Severe reduction	G4	[Red Classification (G3aA3, G3bA2, G3bA3, G4A1, G4A2, G4A3, G5A1, G5A2, G5A3)]	[Red Classification (G3aA3, G3bA2, G3bA3, G4A1, G4A2, G4A3, G5A1, G5A2, G5A3)]	[Red Classification (G3aA3, G3bA2, G3bA3, G4A1, G4A2, G4A3, G5A1, G5A2, G5A3)]
	<15 Kidney failure	G5	[Red Classification (G3aA3, G3bA2, G3bA3, G4A1, G4A2, G4A3, G5A1, G5A2, G5A3)]	[Red Classification (G3aA3, G3bA2, G3bA3, G4A1, G4A2, G4A3, G5A1, G5A2, G5A3)]	[Red Classification (G3aA3, G3bA2, G3bA3, G4A1, G4A2, G4A3, G5A1, G5A2, G5A3)]

URGENT REFERRAL (CKD Referral Guidelines)

- sustained decrease in GFR > or = 25% and a change in GFR category within 12 months or a sustained decrease in GFR of 15 ml/min/1.73 m² per year
- CKD 5

If clinical concerns please contact:

On-call team via RBFT switchboard (0118 322 5111)
9-5 on-call Renal registrar Bleep 176
Out of hours On-call Renal consultant

Referral Criteria for CKD [CKD Referral Guidelines]

- GFR < 30 ml/min/1.73 m² with or without diabetes
- ACR 70 mg/mmol or more, unless known to be caused by diabetes and already appropriately treated
- ACR 30 mg/mmol (ACR category A3) or more, together with haematuria
- Hypertension that remains poorly controlled despite the use of at least 4 antihypertensive drugs at therapeutic doses
- Known or suspected rare or genetic causes of CKD
- Suspected renal artery stenosis.